

# TROPICAL

"THIS DESIGN IS AN INTERPRETATION OF THE MODERN KIWI bach. With its raking plywood ceilings, spacious upstairs bedrooms and its downstairs informal open plan living, Tropical is a friendly yet impressive setting for a low maintenance carefree beach lifestyle in absolute comfort."  
Jorgen Fransden – Ambienti Architects

by Ambienti

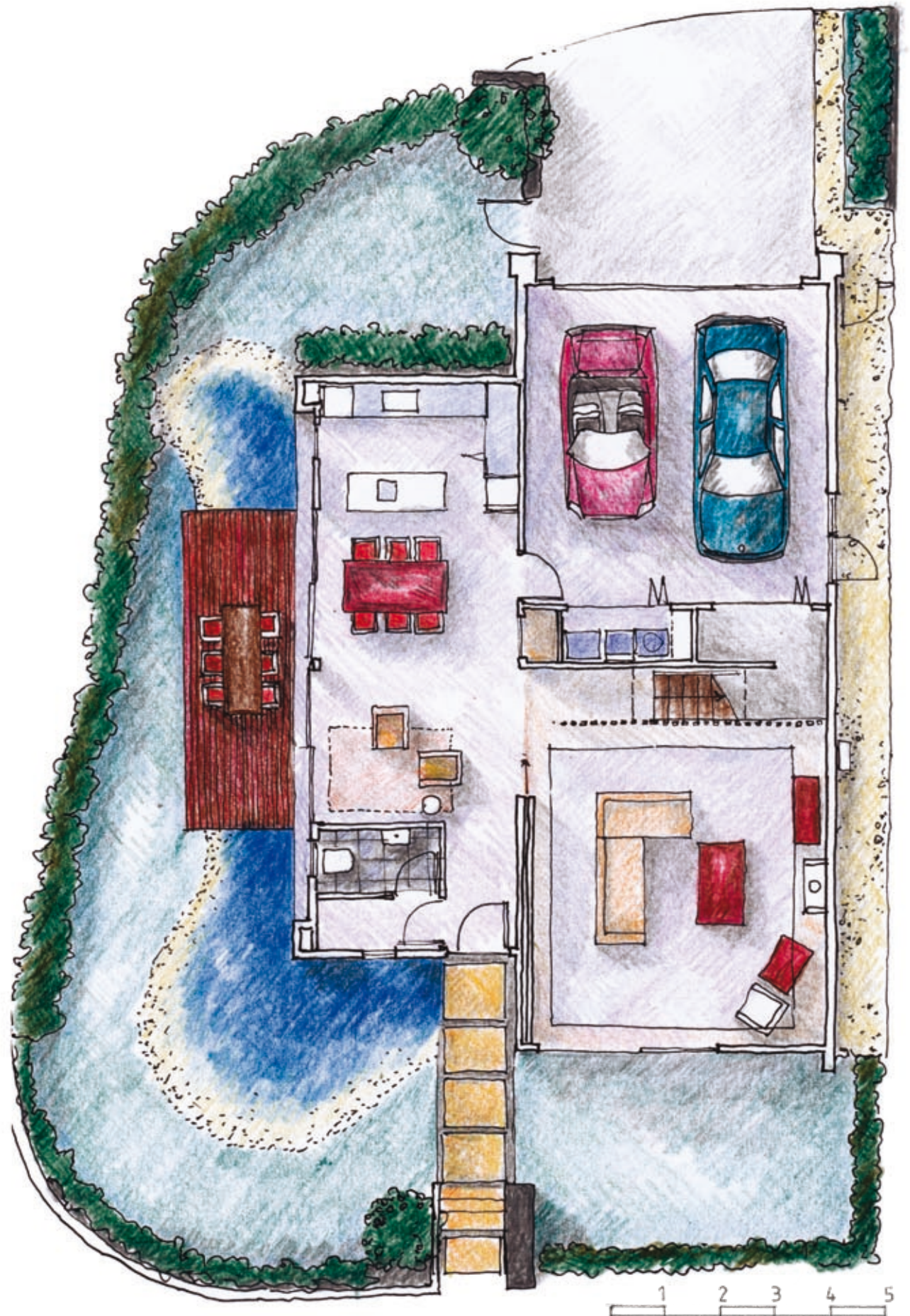


# GROUND FLOOR PLAN

## TROPICAL

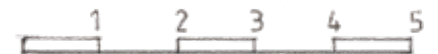
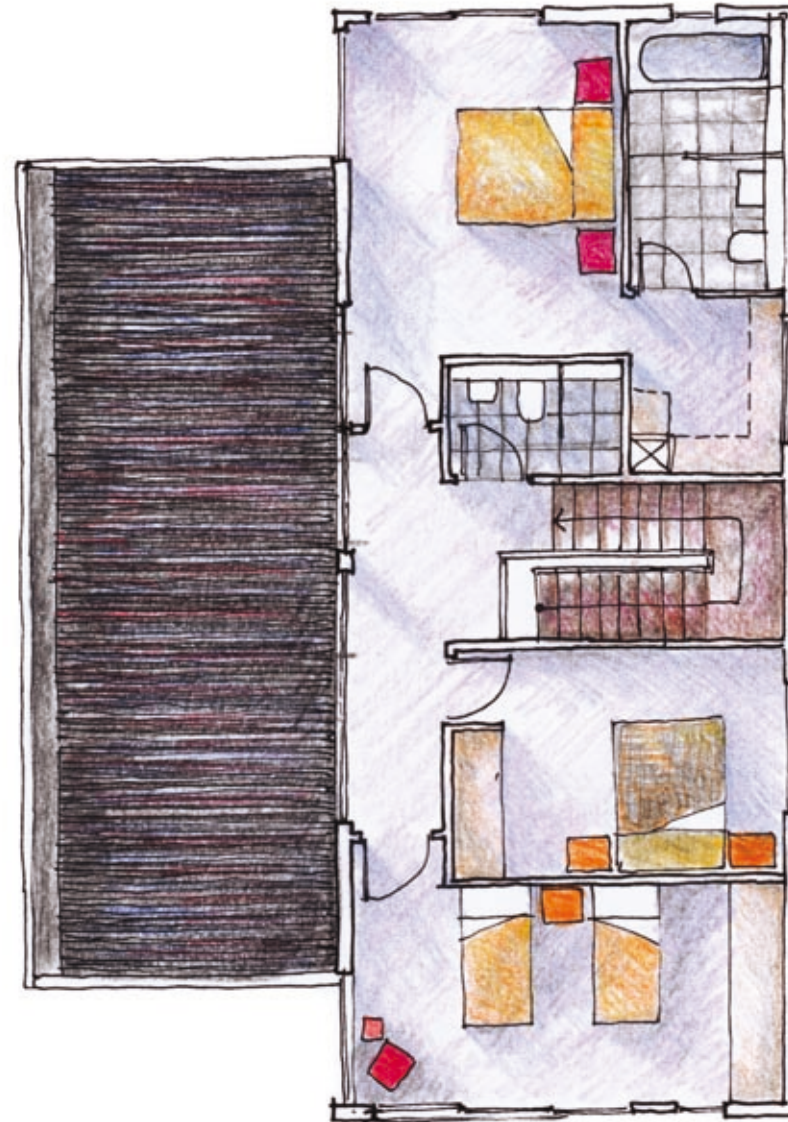
by Ambienti

Total	224 m <sup>2</sup>
Ground floor	100 m <sup>2</sup>
Upper floor	85 m <sup>2</sup>
Deck area	35 m <sup>2</sup>
Garage area	39 m <sup>2</sup>
Garage spaces	2
Bedrooms	3
Bathrooms	2.5



# FIRST FLOOR PLAN

- Designed for a corner lot
- Grand, formal living space with fireplace
- Casual family living and dining area with open plan kitchen opens onto large entertainment deck
- Second deck at front opens from formal living area
- 3 double bedrooms (Master with walk-in dressing room)
- 2 bathrooms (1 ensuite) plus ground floor powder room
- Secure double garaging at rear with direct internal access, laundry and storage room



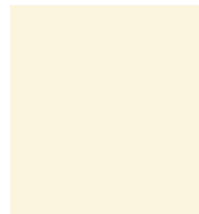
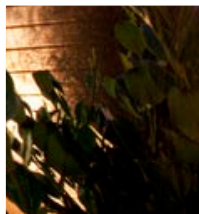
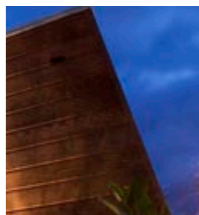
## COAST PAPAMOA BEACH

30 Papamoa Beach Road, Papamoa, New Zealand

### CONTACT

0508 3727377

[coastpapamoabeach.co.nz](http://coastpapamoabeach.co.nz)



FRASERS PROPERTY